

Crestron Panel Instructions



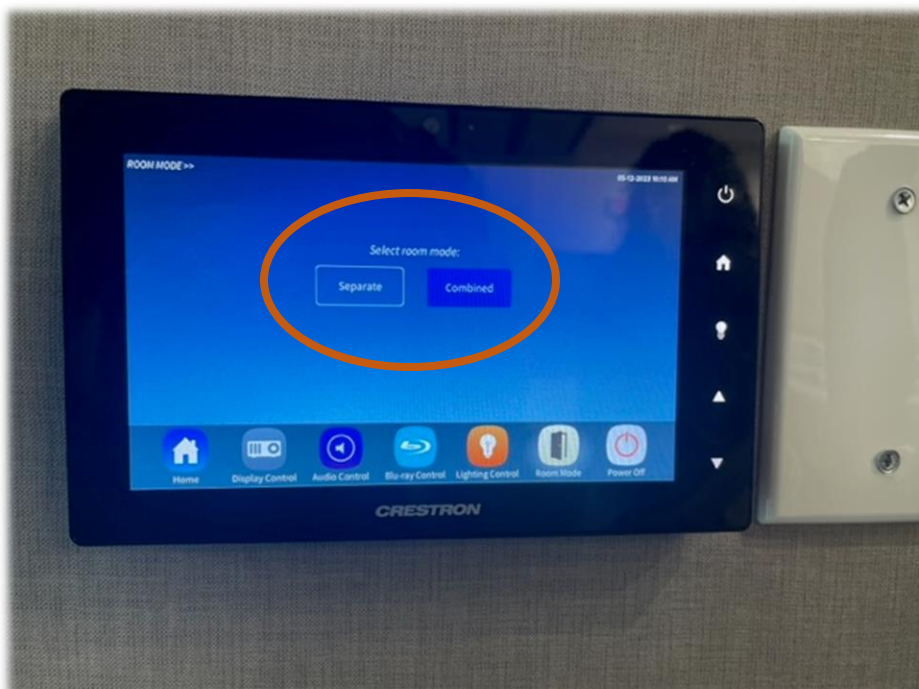
- This is a Crestron media panel.
- These panels allow users connect their device to the audiovisual system to give presentations, live-stream meetings, show films, etc.
- It is a touchscreen interface. The buttons in the black border, on the right, are used only by technicians.
- Crestron panels are located in Rebrary and the Board room.
- The Crestron panel in the Board room is handheld and charges in a cradle.

Navigating the Crestron Panel

- The Crestron panel has control options in a row at the bottom of the touch screen panel.
- The Home & Power buttons are self-explanatory.



- Room Mode allows you to operate the AV in Rebrary separately or combined.
- If you choose Combined mode, you can control both sides of the room from one panel.



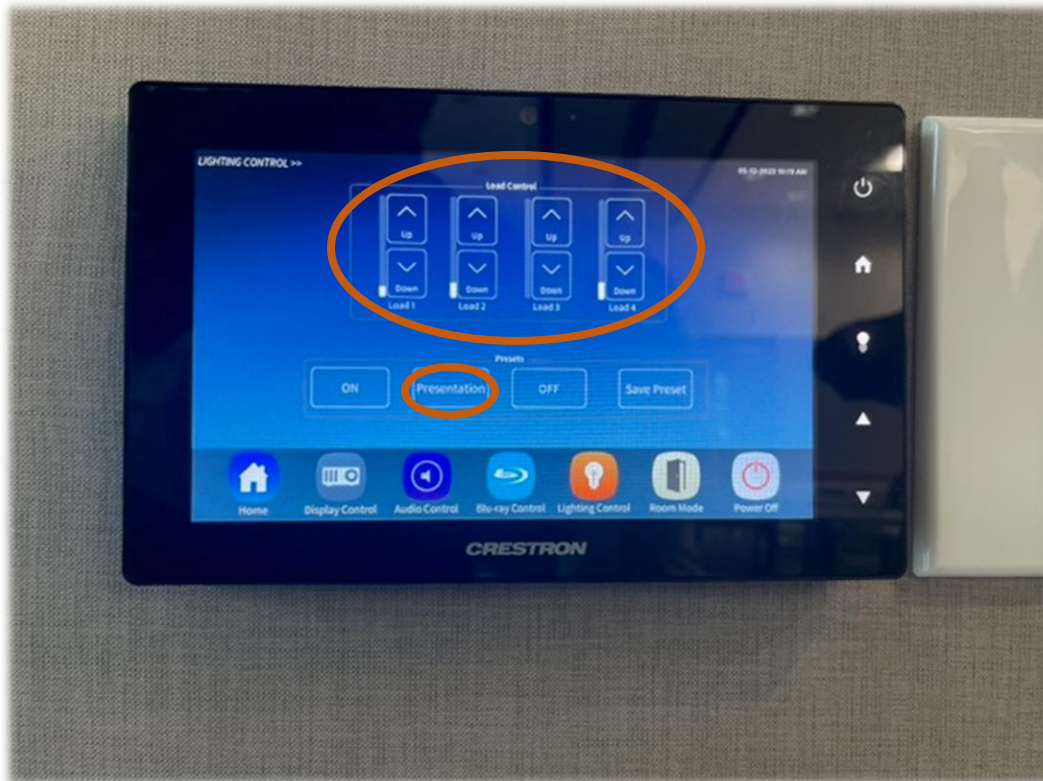
- Display Control allows you select the input source.



- Audio Control allows you to control the volume of both the speakers and the microphones (stored in the AV/Chair closet).



- Lighting Control allows you to control the room lighting in Rebrary from this panel.
- The Presentation preset is recommended for most situations.



Input Sources



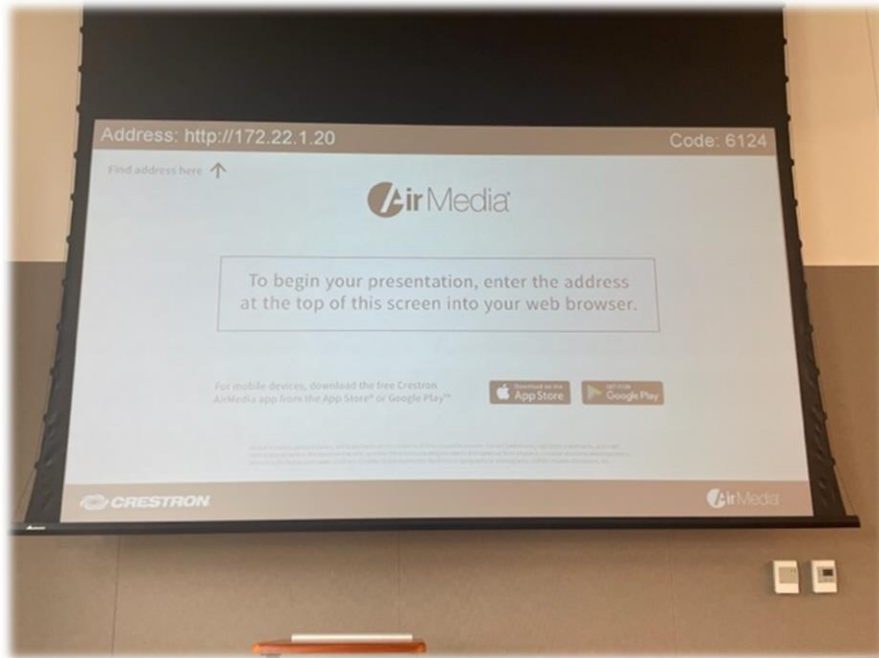
- The Crestron panels in Rebrary have 3 possible input sources:
 - Using a cable into the wall plate
 - Streamed through software/app called AirMedia
 - A Blu-ray player
- The Crestron panels in the Board room have 2 possible input sources
 - Using a cable into the floor box under the table
 - Streamed through software/app called AirMedia

Wall Plate

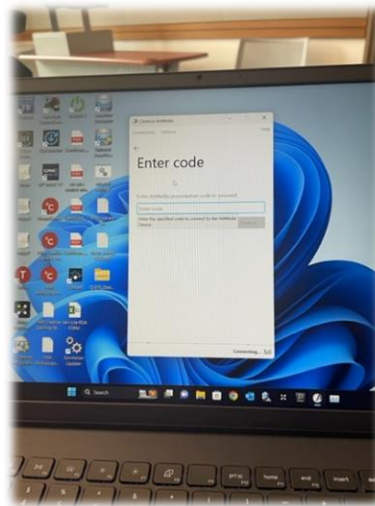
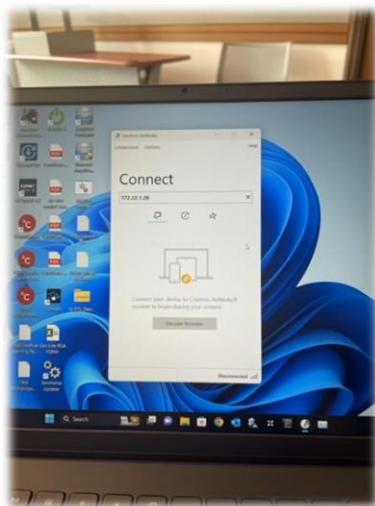


- Most users will connect their device to the wall plate using an HDMI cable.
- The HDMI port is the top, middle port labeled "HDMI" and "HDMI IN."
- Below it is the VGA port which will be used in rare cases.
- There's also a standard audio jack and a USB-A port which you will not be used.

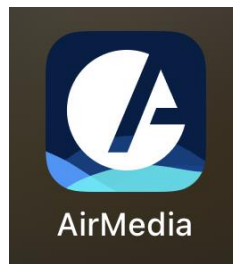
Air Media - Computer



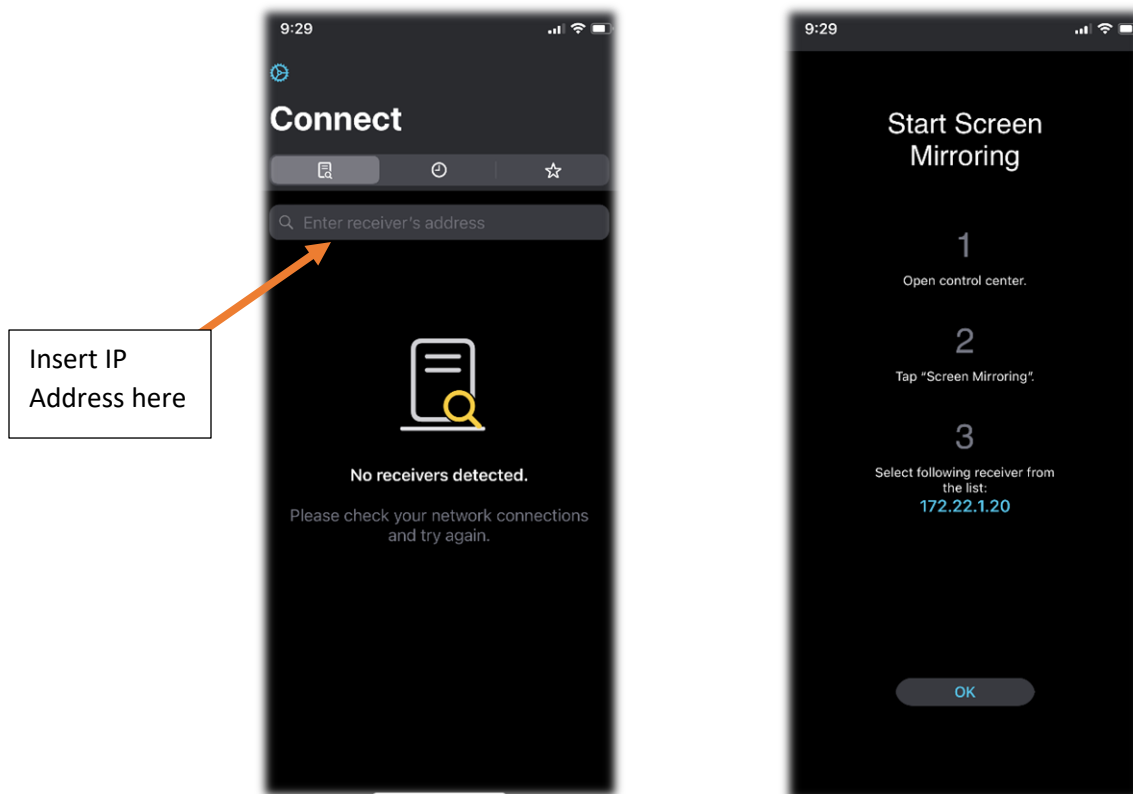
- AirMedia allows you to stream content from your device to the AV system.
- Your device must be connected to LIB_ONLINE or Lib_Meeting.
- If you're using a computer, enter the URL, located in the upper lefthand corner of the screen, in your web browser. This will download and run the AirMedia program.
- Enter the IP address that appears in the upper lefthand corner of the screen when prompted.
- Enter the code that appears in the upper righthand corner when prompted.
- It looks like this:



AirMedia – App



- The AirMedia app is available for download from the App Store or Google Play.
- Your device must be connected to LIB_ONLINE or Lib_Meeting.
- Launching the app prompted a search for the receiver's IP Address (located in the upper lefthand corner of the screen).
- Next the AirMedia app prompted use of the Screen Mirroring function of my device.



AirMedia – App (con't.)

- To enable or disable screen mirroring on an iOS device, open the control center and click on the screen mirroring button.
- Select the receiver with our very familiar IP Address.
- Enter the code that appears in the upper righthand corner when prompted.



- User experience may vary depending on the device. Think critically when navigating unfamiliar devices or do a Google search to help troubleshoot your question.